

**FIFTYNINE**

Design by Per Weiss 2011  
Original Innovation / All rights reserved

A multifunctional and modular design intended for your living room. If used alone, the sofa bed will work fine in rooms, as well

**Fiftynine collection:**

- Fiftynine multifunctional sofa
- Fiftynine multifunctional chair
- Fiftynine footstool

**Bed Size:**

115 x 210 cm

**Comfort:**

Pocket spring, see page 66

**Legs:**

- Option 01\_ Dark stained wood and mat black powder coated steel
- Option 02\_ Light stained wood and silver powder coated steel

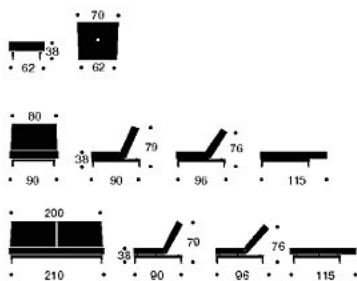
**Page 34:**

Fiftynine sofa and chair with light stained wood legs in class. 501

**Page 35:**

Fiftynine sofa, chair and footstool with dark stained wood legs in class. 514

Only available with multicolored buttons



On stock in Denmark  
For more textile options,  
see page 67



501



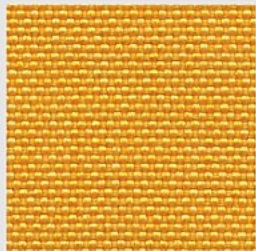
514

On stock in Denmark options are shown in relation to each product

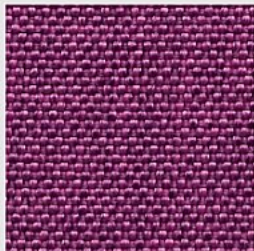
If you want a textile / product combination that is not on stock in Denmark, the time of delivery will be 12 weeks

Uni colours scale 1:1

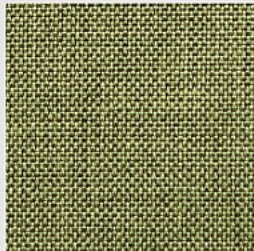
Printed colour and texture samples might vary from actual colours.



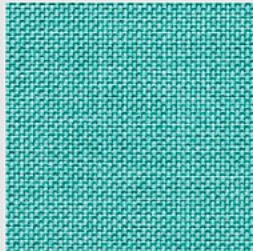
740 Orange Yellow Basic



738 Imperial Purple Basic



221 Olive Green Flashtex



226 Aqua Flashtex



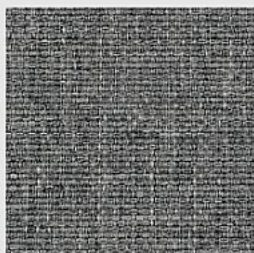
222 Camel Flashtex



219 Sand Flashtex



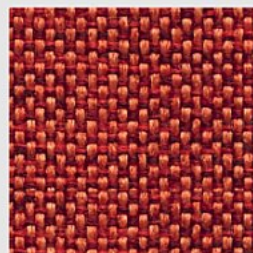
217 Light Grey Flashtex



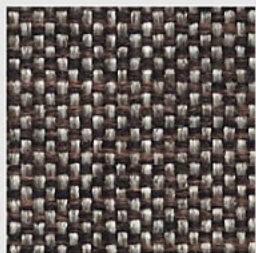
216 Dark Grey Flashtex



218 Black Flashtex



524 Burned Orange Mixed Dance



522 Brown Mixed Dance



515 Blue Nist



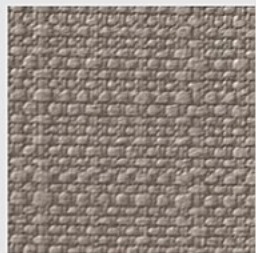
514 Black Nist



501 Sand Begum



503 Dark Brown Begum



631 Grey Classic



654 Camel Wool



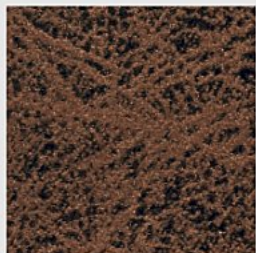
653 Light Grey Wool



652 Dark Grey Wool



551 Brown Faunal



461 Brown Vintage Leather Look



582 Black Leather Look



588 White Leather Look