

## CONVERTIBLE SOFAS

## WING

Design by Andreas Lund, Flemming Hoejfeldt  
& Per Weiss 2004  
Original Innovation / All rights reserved

Designed for rooms, guest rooms, one room apartments  
or for your living room

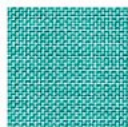
**Bed Size:**  
110 x 200 cm

**Comfort:**  
Pocket spring, see page 66

**Legs:**  
Option 01\_Chrome and mat black powder coated steel  
Option 02\_Stainless steel and mat black powder coated  
steel

Page 14: Wing sofa, dess. 588

Page 15: Wing sofa, dess. 226



226



588

On stock in Denmark  
For more textile options, see page 67





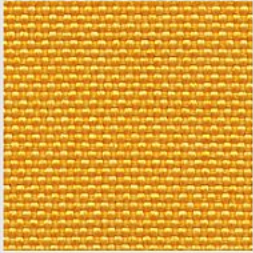
## THE TEXTILES:

On stock in Denmark options are shown in relation to each product

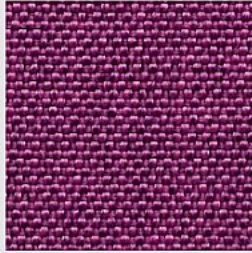
If you want a textile / product combination that is not on stock in Denmark, the time of delivery will be 12 weeks

Uni colours scale 1:1

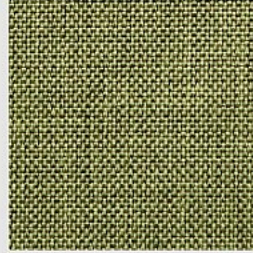
Printed colour and texture samples might vary from actual colours.



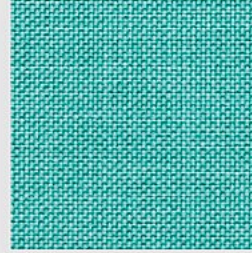
740 Orange Yellow Basic



738 Imperial Purple Basic



221 Olive Green Flashtex



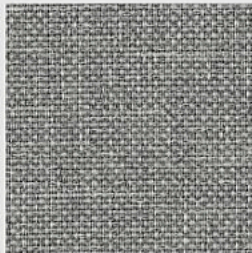
226 Aqua Flashtex



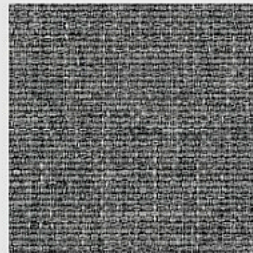
222 Camel Flashtex



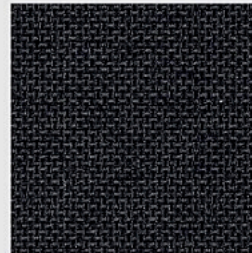
219 Sand Flashtex



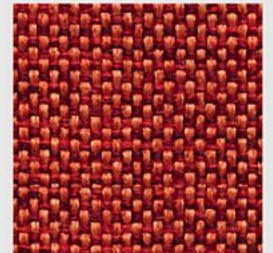
217 Light Grey Flashtex



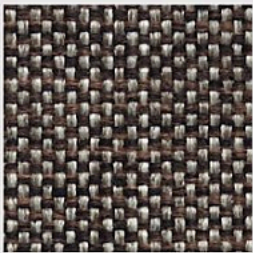
216 Dark Grey Flashtex



218 Black Flashtex



524 Burned Orange Mixed Dance



522 Brown Mixed Dance



515 Blue Nist



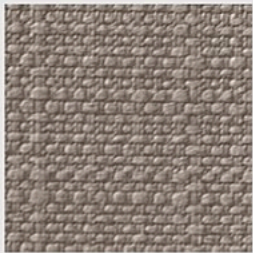
514 Black Nist



501 Sand Begum



503 Dark Brown Begum



631 Grey Classic



654 Camel Wool



653 Light Grey Wool



652 Dark Grey Wool



551 Brown Faunal



461 Brown Vintage Leather Look



582 Black Leather Look



588 White Leather Look