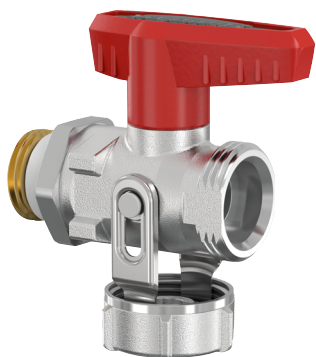


Simplex KFE Ball Valves



Heating



Solar



Potable water



Registration no.*
DW-6102BR0516



ENG Installation and operating instruction

1. Safety instructions



Only allow work on heating and potable water systems to be performed by qualified personnel and in accordance with the respective applicable regulations, guidelines and rules of engineering.

2. Rules/regulations

Refer in particular to:

- DIN 14336** Heating systems in buildings - Installation
- DIN 18380** Heating systems and central hot water supply systems
- VDI 2035** Scale formation in potable water heating systems and water heating systems
- BGV** German Professional Association Regulations (accident prevention regulations)

For the potable water version additionally:

- DIN 1988** Technical rules for potable water installations
- EN 1717** Protection against pollution of domestic water
- TrinkwV** German Potable Water Ordinance

For the solar version additionally:

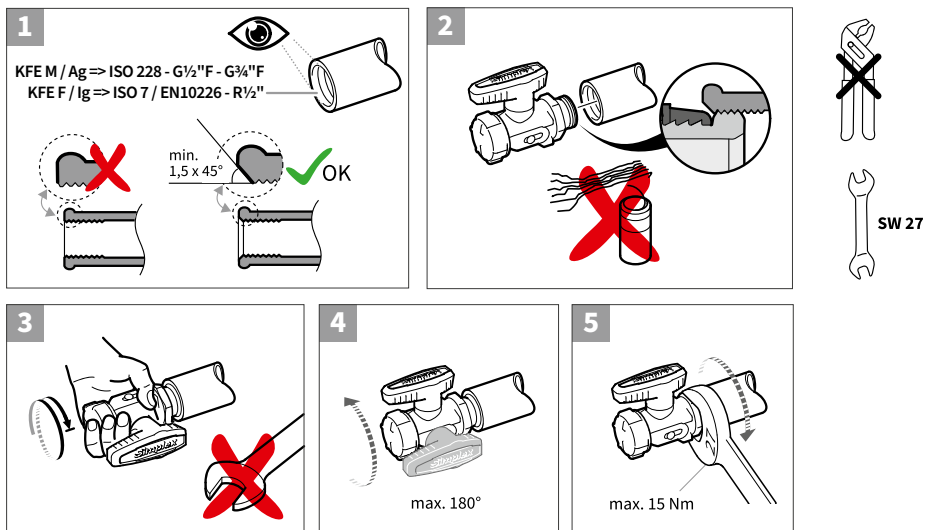
- DIN 12975** Thermal solar systems and its components

DIN = The German Institute for Standardisation

EN = European Standards

VDI = Association of German Engineers

3. Installation



1. Check if the thread is ok in terms of :
 - right thread
 - right size
 - correct shape
 - no dirt, dust (e.g. sawdust) etc.
2. Don't use any additional sealing or tightening material with the self sealing male threaded versions.
3. Screw in by hand - minimum one complete rotation in the area of the self-cutting sealing.
4. In case of turn back (max. 180°) please make sure that one complete rotation is kept in the area of the sealing.
5. Fix the positioning with the lock nut.

4. Specifications

Application	Max operating pressure	Nominal pressure range	Max operating temperature [short time]	Medium
Heating and cooling	10 bar	PN16	110°C [130°C]	Heating water, glycol mixture up to 50%
Drinking water Heating and cooling	10 bar	PN16	110°C [130°C]	Drinking water, heating water, glycol mixture up to 50%
Heating and cooling Solar	10 bar	PN16	180°C [200°C]	Heating water, glycol mixture up to 50%



Contact us !

Aalberts hydronic flow control

Nederland

Postbus 30110 / 1303 AC Almere
Fort Blauwkapel 1 / 1358 AD Almere

+31 (0)36 526 2300 / nl.info@aalberts-hfc.com

flamco.aalberts-hfc.com